

## New Board 2011-12

### IREM Edmonton #54

Chapter President: Rose Evans CPM®, ARM®  
Ayre & Oxford 780-448-4984  
Past President: Babita Khurana CPM®, RPA  
780-297-2000  
1st Vice President: Vlado Brcic CPM®/CLO  
The Dakova Management Group 780-220-5047  
Vice President: Barry Williams, MSc, BSc, CPM®, ARM®  
Bentall LP 780-432-3140  
Treasurer: Jenny Stuart, ARM®  
Westcorp Properties 780-431-3316  
Director: Chrystal Skead, CPM®, ARM®  
Director: Barb Sommerfield  
Capital Regional Housing 780-420-6161 EXT 607  
Director: Yolanta Murphy ARM®  
Canada Mortgage and Housing Corp. 780-423-8703  
Director: Lorna MacNeil  
Exit Realty Ft. MacMurray 780-791-3948

### REIC Edmonton #3

Chapter President: Lindsay Carlson FRI, CRES  
Jayman Realty (Edm) Inc. 780-441-6655  
Vice President: Shami Sandhu, CRES  
Re/Max River City 780-439-7000  
Treasurer: Ernie Paustian CRP, AACI, P.App  
Delta Appraisal Corp. 780-469-2993  
Director: Gerald Tostowaryk, FRI, CRES  
The Realty Company 780-452-2700  
Director: Shey Ergil MBA, AACI, P.App, CRP  
Ergil & Jackson Appraisals Ltd. 780-442-6636  
Director: Don Myhre, CRP 780-916-6540  
Director: Peter Smith FRI  
Canadian Valuation Grp. 780-421-4200  
Director: LUCIEN ROY, FRI(E), CPM®, FCCI, CMOC,  
ACCI, ACM  
Larlyn Property Mgmt. Ltd 780 424-7060  
Joint Historian: Bob Palamerek FRI, CPM®  
P: 780-458-7067

## Congratulations 2011 REIC Pursuit of Excellence Awards



IREM 54 wins REIC Community Services Award

This Community Services Award honours the chapter and/or member that have demonstrated an outstanding commitment to the local community, through volunteer services and charitable work, within the chapter's jurisdictional boundaries. Thank you everyone who supports the JDRF Golf Tournament and the Fusion Kitchen Charity at our Christmas luncheon.



LUCIEN ROY, FRI(E), CPM®, FCCI, CMOC, ACCI, ACM  
WINS 2011 REIC Emeritus

The REIC Emeritus is the highest honour that a member of REIC can receive. This award of excellence recognizes a member's sustained commitment and outstanding contribution to REIC at both national and chapter levels.

## CALENDAR 2011

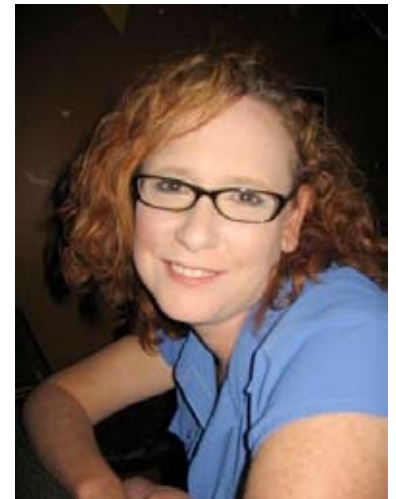
### Calendar of Events 2011

August 19	JDRF Golf @ The Ranch Golf and Country Club
September 9	Board Meeting
September 12	Tour of Centre in the Park
September 15	Lunch Meeting
September 19-24	IREM RES201 Successful Site Management
October 19-21	REIC 2600 Ethics & Business Practice
November 21-25	REIC 2260: Real Estate Investment Analysis
December 8	Christmas Luncheon



President's report  
IREM Chapter 54  
Roseanne Evans CPM, ARM

I would like to extend a congratulations and welcome to new Member of the IREM Board Lorna MacNeil of Exit Realty in Ft. MacMurray, and REIC Chapter board member, Peter Smith of Canadian Valuation Group. We are looking forward to an exciting New Year for our local Chapter. I would like to take this opportunity to thank all the volunteers who provided their time and efforts in the last year. A special thank you to Sharon Radford for all of her hard work we sincerely appreciated.



Our Annual General meeting was held on May 17th, 2011 at the Marriot West End Court Yard. We extend a big thank you to the Marriot for their hospitality; and for providing us with a tour of this new hotel. In addition; our two special guests; Sandi Caputo, IREM RVP Region 14 and Chrystal Skead, REIC National President offered us with an informative history and future outlook of REIC and IREM.

I recently returned from the REIC Annual General Meeting and Conference in Saskatoon Saskatchewan and I am honored to say we brought home some awards again this year! IREM Chapter 54 won the 5 Star Chapter of the year Award and the REIC Community Services Award.

Your Board of Directors is committed to providing you with value for your Chapter Membership. We need Committee Volunteers to assist in achieving our goals. If you are interested, please contact Sharon Radford.

Thanks for your support!

## Education

September 19-24 RES 201  
(Successful Site Management)  
October 19-21 REIC 2600  
(Ethic's and Business Practice)  
Please register with Sharon (780 453-9368)

November 21-25 REIC 2260:  
Real Estate Investment Analysis  
Please register with National for REIC 2260

The REIC 2600: Ethics and Business Practice has been rewritten and revised to reflect the business practices of 2011.

### [www.reicedmonton.org](http://www.reicedmonton.org)

- \* Find a member with the search tool.
- \* Upcoming Education courses.
- \* Links to other associations.
- \* And More

### <http://www.irem.org/>

- \* IREM First
- \* Upcoming conferences
- \* Links to publications
- \* Sustainability for going green
- \* Industry Partners

## REIC National and IREM International

### Fall IREM Leadership Conference October 11-15, 2011

**Mission Possible.** A word that has been absent from daily vernacular in the recent past. But, at the IREM Fall Leadership Conference this October, it's the mantra. The Conference blends a diverse spectrum of learning, resources and affiliations that will speak to real estate leaders at all levels of their career. The knowledge you glean here – like your membership in IREM – will unveil opportunities and make:



- \* Tailored learning that is relevant to your professional career and IREM leadership path – **POSSIBLE**
- \* Fresh insights and proven strategies that can immediately impact your bottom line – **POSSIBLE**
- \* Interactive events designed to strengthen and expand your business network across the globe - **POSSIBLE**
- \* Live forums that engage and stimulate idea sharing and discussion - **POSSIBLE**

Set amidst the beauty and urban excitement of downtown San Diego get ready for an event that delivers possibilities.

To register visit <http://www.irem.org/iflc/index.cfm>

## REIC/IREM 2011 Golf Tournament

August 19 at the Ranch Golf and Country Club. Once again this year we are raising funds for Juvenile Diabetes Research (JDRF). We are combining our tournament with the annual JDRF - Fernando Pisani golf tournament so register early. There is a registration form attached to this newsletter.

**The Ranch Golf & Country Club**  
**Continental Breakfast**  
**8:30 a.m. Shotgun Start Texas Scramble**  
**18 Holes of Golf**  
**Power Cart**  
**Auction and Lunch**  
**Prizes \$150/person**



## Support

**CRP** Reserve fund planning services are in high demand not only in the booming condominium industry, but in all areas of property management and maintenance. The Institute of Real Estate Studies (IRES) is proud to be partners with the Real Estate Institute of Canada (REIC) to offer the Certified Reserve Planner (CRP) and Associate Reserve Planner (ARP) professional. The REIC Edmonton Chapter has a number of CRP designated members, to find the list of members with this designation visit reic.ca. Support our members and your colleagues when a Reserve Fund Study is required.

**CRF** Certified in Real Estate Finance designation assures you that you are dealing with a seasoned real estate professional who is committed to providing you with the very best service. Whether you are dealing with consultants, portfolio administrators, mortgage brokers or analysts in real estate finance, rigorous specialized training gives CRF professionals an edge that will help you maximize the short and long-term value of your investment.

## Friends of REIC and IREM

The friends of REIC and IREM has been created to encourage a relationship between property managers, real estate professionals and industry suppliers. Each company signing up with the "Friends" program will have a link from our website to theirs plus opportunity to advertise in our monthly newsletter. We encourage our members to contact these companies who support our local chapters.

**Gary Schmidt Kentucky Bluegrass**

780 415-5201

[gwschmidt@telus.net](mailto:gwschmidt@telus.net)

<http://www.kentuckylandscape.ca/>



**Cecil Kuchma Total Energy Solutions Inc. 780.217.7222**

[cec@totalenergysolutions.ca](mailto:cec@totalenergysolutions.ca)

<http://www.totalenergysolutions.ca>



Total Energy Solutions Inc

**Ryan Nesbitt**

**(Don's Powervac) Environmental Solutions 780-444-5967**

[ryan@environmental-solutions.ca](mailto:ryan@environmental-solutions.ca)

<http://www.furnaceman.ab.ca/>



**Pranil Mudaliar**

**Top Quality Inspections Inc.**

780-243-0121 [www.topqualityinspections.com](http://www.topqualityinspections.com)



**Jerry Poon Amptec Fire and Security**

780 426-7878 (24 hrs)

<http://www.amptec.ca/>

[jerry@amptec.ca](mailto:jerry@amptec.ca)



**Marlene Ongaro**

**ProSource Wholesale Floorcoverings 780-476-8723**

[www.prosourcefloors.ca](http://www.prosourcefloors.ca)



## Sponsorship Opportunities

**August 19, 2011**  
**The Ranch Golf & Country Club**

**Lunch Sponsor - \$3,000**

Custom signage at driving range and on program plus  
four golf passes

**Breakfast Sponsor - \$1,000**

Custom signage at continental breakfast and on program plus  
two golf passes

**Cart Sponsorship - \$1,000**

Custom signage on all golf carts plus two  
golf passes

**Driving Range Sponsor - \$500**

Custom signage displayed at driving range  
and on program

**Hole Sponsorship - \$250**

Signage at the hole and on program

Donations of prizes are encouraged and will be  
acknowledged in program

**For available sponsorship opportunities, please call  
(780) 428-0343 or fax (780) 428-0348**



**Method of payment:**

VISA     MasterCard     American Express     Invoice     Cheque     Cash

Card Number: \_\_\_\_\_ Expiry date: \_\_\_\_\_ CVVC: \_\_\_\_\_

Name as it appears on Card: \_\_\_\_\_ Amount \$ \_\_\_\_\_

Cheques should be made payable to: **Juvenile Diabetes Research Foundation**  
**17321 108 Ave NW, Edmonton, AB T5S 1G2**

Name as it should appear on program: \_\_\_\_\_

Company Name: \_\_\_\_\_

Address: \_\_\_\_\_ City: \_\_\_\_\_ Province: \_\_\_\_\_

Postal Code: \_\_\_\_\_ Tel: \_\_\_\_\_ Fax: \_\_\_\_\_

Company Contact Name: \_\_\_\_\_

## Golfer Registration

**August 19, 2011**  
**The Ranch Golf & Country Club**  
**Continental Breakfast**  
**8:30 a.m. Shot Gun Start**  
**Texas Scramble**  
**18 Holes of Golf**  
**Power Cart**  
**Auction and Lunch Prizes**  
**\$150/person**

### Sponsorship Opportunities

Lunch Sponsor - \$3,000  
 Breakfast Sponsor - \$1,000  
 Cart Sponsorship - \$1,000  
 Driving Range Sponsor - \$500  
 Hole Sponsorship - \$250  
 Inquiries, please call (780) 428-0343 or fax (780) 428-0348

To register, complete the bottom portion of form and send cheque payable to:

**Juvenile Diabetes Research Foundation**  
 17321 - 108 Ave NW, Edmonton, AB T5S 1G2



**1** Golfer Name: \_\_\_\_\_  
 Address: \_\_\_\_\_  
 City: \_\_\_\_\_ Prov: \_\_\_\_\_ Postal Code: \_\_\_\_\_  
 Telephone: \_\_\_\_\_ E-mail: \_\_\_\_\_

**2** Golfer Name: \_\_\_\_\_  
 Address: \_\_\_\_\_  
 City: \_\_\_\_\_ Prov: \_\_\_\_\_ Postal Code: \_\_\_\_\_  
 Telephone: \_\_\_\_\_ E-mail: \_\_\_\_\_

**3** Golfer Name: \_\_\_\_\_  
 Address: \_\_\_\_\_  
 City: \_\_\_\_\_ Prov: \_\_\_\_\_ Postal Code: \_\_\_\_\_  
 Telephone: \_\_\_\_\_ E-mail: \_\_\_\_\_

**4** Golfer Name: \_\_\_\_\_  
 Address: \_\_\_\_\_  
 City: \_\_\_\_\_ Prov: \_\_\_\_\_ Postal Code: \_\_\_\_\_  
 Telephone: \_\_\_\_\_ E-mail: \_\_\_\_\_

#### Credit Card

- Visa  
 MasterCard  
 American Express

Card Number: \_\_\_\_\_

Expiry Date: \_\_\_\_\_

CVVC: \_\_\_\_\_